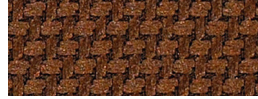


### Momentum • Tradition

Gr B



Ash (F0914E-0162)



Branch (F0914E-0173)



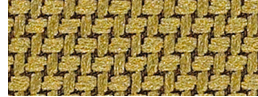
Class (F0914E-0184)



Distant (F0914E-0195)



Flirt (F0914E-3924)



Fronc (F0914E-0206)



Grain (F0914E-0217)



Hedge (F0914E-3935)



Hidden (F0914E-0228)



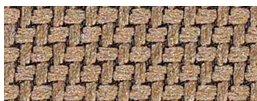
Isle (F0914E-0239)



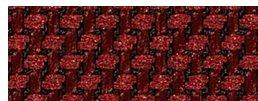
Jazz (F0914E-0250)



Kelly (F0914E-0261)



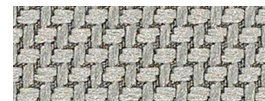
Latte (F0914E-0272)



Malbec (F0914E-4320)



Miller (F0914E-0283)



Mist (F0914E-3946)



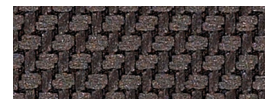
Peel (F0914E-0294)



Plated (F0914E-0305)



Regal (F0914E-0316)



Sly (F0914E-0327)



Soar (F0914E-0338)



Soy (F0914E-0349)



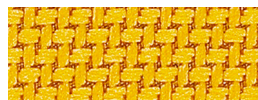
Spiced (F0914E-0360)



Sprout (F0914E-3957)



Sterling (F0914E-0371)



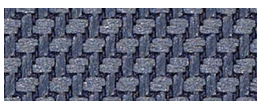
Sun (F0914E-0382)



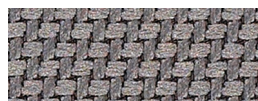
Tango (F0914E-4540)



Theater (F0914E-0393)



Wash (F0914E-0404)



Weld (F0914E-0415)

The colors on this card are digital representations. Please refer to an actual sample before finalizing your selection.

# NeutralPosture

## Specifications

---

### Content

72% post-consumer recycled content, 28% polyester recycled content

### Repeat

H: 0

V: 0

### Width

56 in.

### Weight

1.00 lb.

### Cutting Direction

NR - Non-railroaded

### Cleaning Code

W-S: Water-based

Cleaning Agents or Foam

## Performance

---

- Greenguard Certification : Gold
- Colorfastness Wet : N/A
- Colorfastness Dry : N/A
- Passes Cal-117-2013
- UFAC Class 1; NFPA 260 Class 1; ASTM E84
- Tensile Strength Weft : N/A
- Tensile Strength Warp : N/A
- Seam Slippage Weft : N/A
- Seam Slippage Warp : N/A
- UL Recognized

The colors on this card are digital representations. Please refer to an actual sample before finalizing your selection.